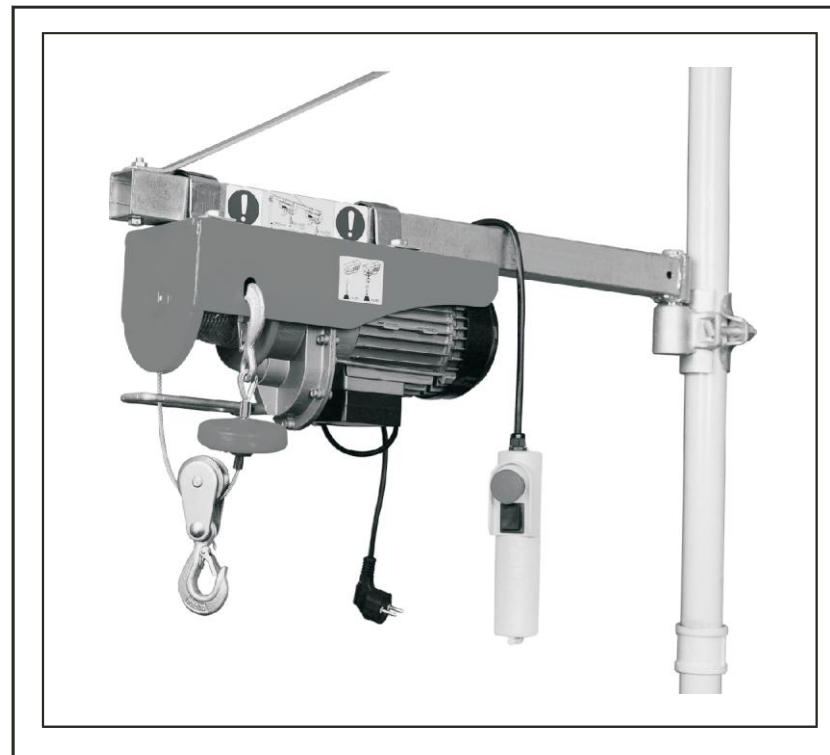


OPERATING INSTRUCTIONS

MINI ELECTRIC WIRE HOIST

HUSAR
WINCH BETTER STRONGER TOUGHER



BST P 150 – BST P 1200



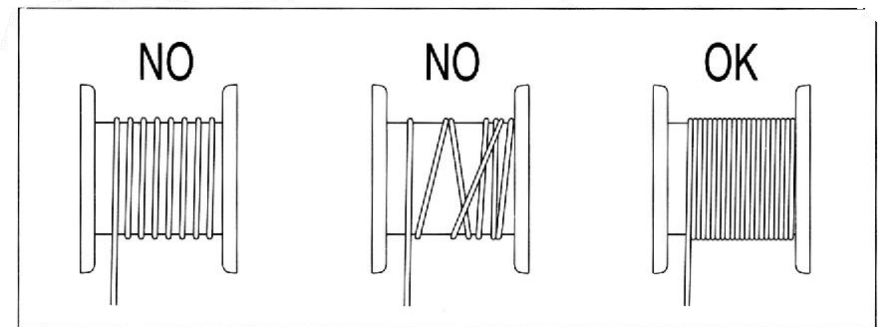
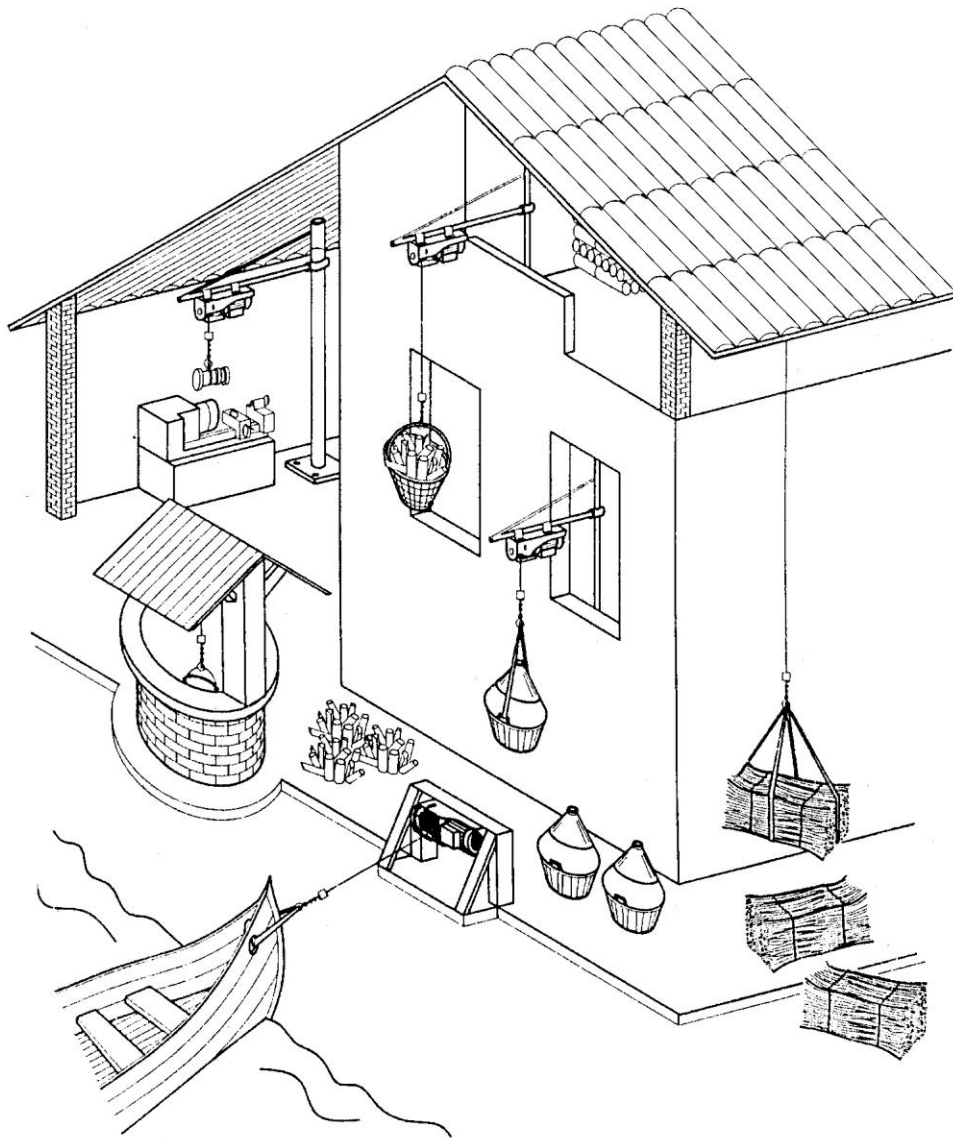


Congratulation for your excellent choice. Your new electric tool is manufactured in compliance with the best quality and reliability standards, ensure you efficiency and safety for a long period of time.

GENERAL SAFETY RULES

WARNING! Before using this electric tool, carefully read the general safety rules listed below:

- Your sockets must comply with safety rules.
In case your sockets are not suitable, they should be checked by a skilled electrician.
- Your socket plug must absolutely be grounded and your electric system must be supplied with a magneto cut-out safety.
- When the machine is running unwatched, be careful that children cannot reach it.
- Do not pull the electric cable to disconnect the plug.
- The machine shall be protected from frost and low temperature.
- In case the machine cannot hoist a load, do not keep pressing the hoisting push-button; this means that the load exceeds the machine maximum capacity.
- The machine shall not be disassembled when running or connected to power.
- The machine shall not be operated when it is raining or storming.
- Do not stand under hoisted weights.
- Before starting the work, make sure that the steel wire cable is correctly winded around the reel and the pitch is equal to the cable diameter.



- OBSERVE THE MAXIMUM LOAD INDICATED ON THE HOIST, NOT THAT ON THE HOOK!

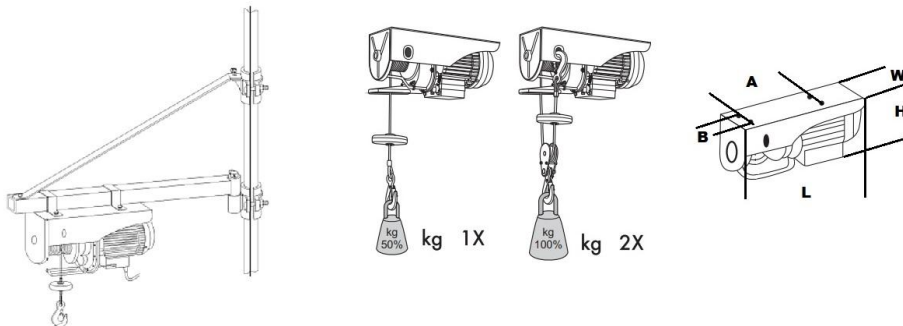
- Leave at least three turns of cable around the reel, so that the cable connection is not under stress.
- To avoid any danger, do not wind more than 15 mt of cable around the reel.
- In case the steel cable is worn out, it must be replaced only with a cable of same features or a cable made by a manufacturer.
- Before starting the work, check that switches are in good operating conditions.
- In case the hoist stops during the lowering of a load, it normal that the load goes down a few centimeters more because of inertia.
- ATTENTION!! THE HOIST ELECTRIC MOTOR IS NOT SUPPLIED WITH OVERLOAD CUT-OUT (TO AVOID AN UNEXPECTED AND UNWANTED RESTART) THEREFORE, IF YOU ARE UNABLE TO HOIST A LOAD DO NOT INSIST AND LET THE MOTOR COOL DOWN.

INSTALLATION

The hoist <STANDARD VERSION> is provided with a specially designed bracket system which allows to hold pipes box.

Check the socket features (volt-hertz) correspond to those indicated on the machine plate; then you can insert the plug.

In case a cable extension is needed, it is absolutely important to respect the cable's data.



DIMENSION

BST P Series	150	250	300	400	500	600	800	1000	1200
L	330	330	330	385	385	385	410	470	470
W	134	134	134	147	147	147	147	170	170
H	146	146	146	178	178	178	178	265	265
A	212			220		220		270	270
B	88			100		100		112	112
Screw Size	M8x22mm			M10x24mm			M12x30mm		

INSULATION CLASS

Insulation Class: B

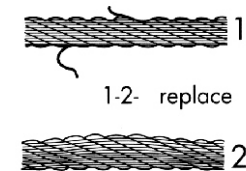
Protection Class: IP54

Working System: Intermittent Duty Cycle (S3 20%-10min)

MAINTENANCE

- Periodically check that the steel cable is in good conditions.
- Check that the screws securing the brackets and reduction gear are well tightened.
- Check the conditions and tightening of the nuts securing the steel cable clamps.
- Periodically check that motor stop switch and push button switch are in good operating conditions
- Periodically check whether the wire rope is in good condition. If not, it need to be replaced by respecting the following chart.

EXTENSION LENGTH	EL. CABLE SECTION
Up to 20m	1.5mm
da 20 a 50m	2.5mm

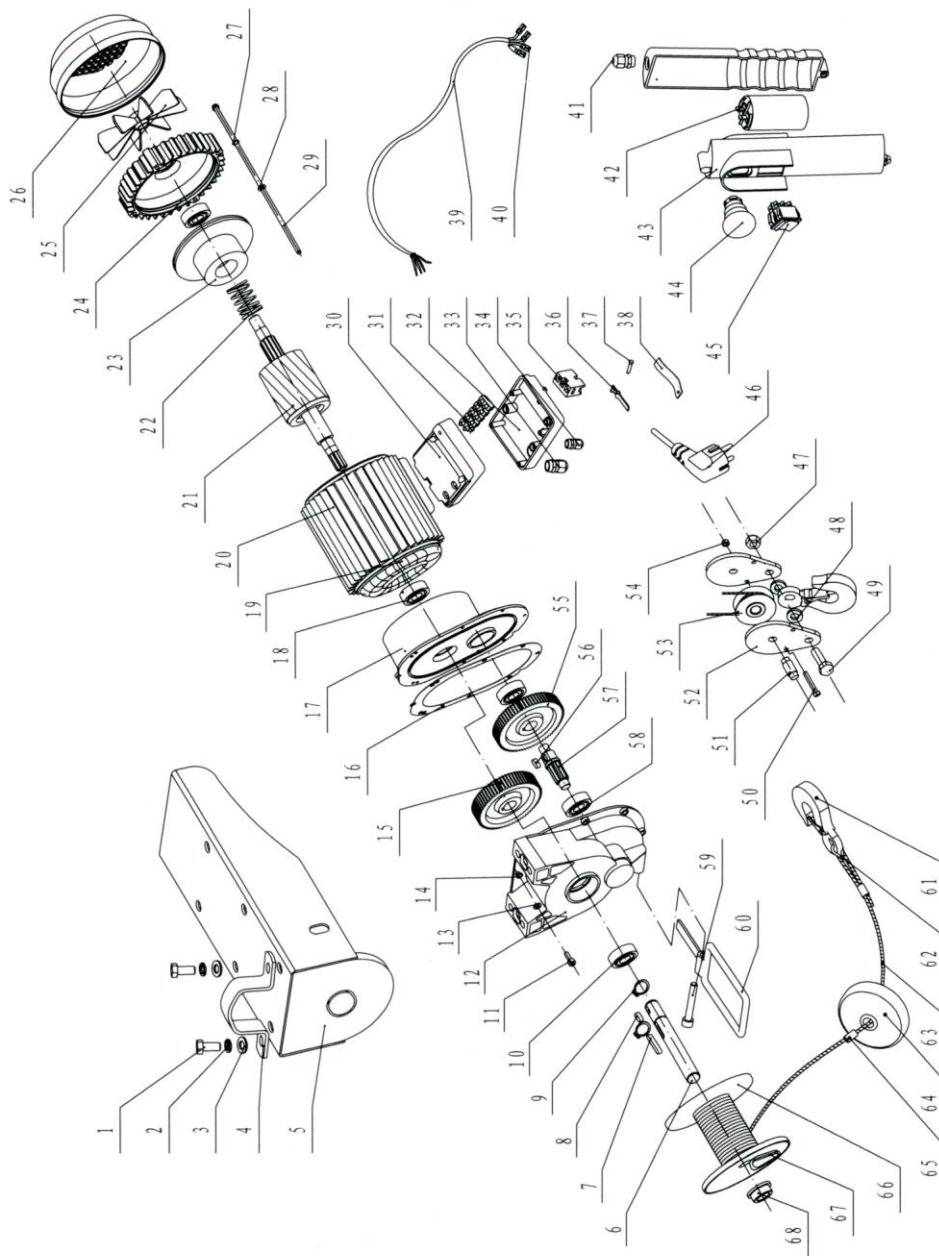


BST P SERIES		150	250	300	400	500	600	800	1000	1200
Wire Rope Size	Dia. Length	3mm 18,5M	3mm 18,5M	3mm 18,5M	4mm 18,5M	4mm 18,5M	4mm 18,5M	5mm 18,5M	6mm 18,5M	6mm 18,5M

TECHNICAL DATA

Type	Hook	Rated Capacity (kg)	Lifting Speed (m/min)	Lifting Height (m)	Rope Length (m)	Input Power (W)	Working System	Rated Voltage (V)
BSTP150	Single	150	10	18	18	580	S3	Single Phase 22V/230V 50Hz/60Hz
	Double	300	5	9			20%-10min	
BSTP250	Single	125	10	18	18	620	S3	
	Double	250	5	9			20%-10min	
BSTP300	Single	150	10	18	18	650	S3	
	Double	300	5	9			20%-10min	
BSTP400	Single	200	10	18	18	950	S3	
	Double	400	5	9			20%-10min	
BSTP500	Single	250	10	18	18	1350	S3	
	Double	500	5	9			20%-10min	
BSTP600	Single	300	10	18	18	1500	S3	
	Double	600	5	9			20%-10min	
BSTP700	Single	350	10	18	18	1600	S3	
	Double	700	5	9			20%-10min	
BSTP800	Single	400	10	18	18	1800	S3	
	Double	800	5	9			20%-10min	
BSTP 1000	Single	500	10	18	18	2000	S3	
	Double	1000	5	9			20%-10min	
BSTP 1200	Single	600	10	18	18	2100	S3	
	Double	1200	5	9			20%-10min	

Note: Due to the continue improvement, the technical parameter are subject to change without notice.



No.	Description	No.	Description
1	Hexagon bolt	35	Safety switch
2	Spring washer	36	Breaker contactor
3	Flat washer	37	Locating pin
4	Fixing ring	38	Spring tab
5	Support structure	39	Cable
6	Rope roll shaft	40	Socket
7	Flat key	41	Holding fixture
8	Flat key	42	Capacitor
9	Elastic collar	43	Arm switch lower cover
10	Bearing	44	Urgent stop switch
11	Hexagon fillister head screw	45	Rise and fall switch
12	Gear case	46	Three—prong plug
13	Spring washer	47	Locknut
14	Flat washer	48	Hook washer
15	Gearwheel	49	Hexagon bolt
16	Cushion board	50	Hexagon bolt
17	Front cover	51	Wheel axle
18	Bearing	52	Splint
19	Stator	53	Pulley
20	Stator shell	54	Hook fixed nut
21	Rotor	55	Gearwheel
22	Tripping spring	56	Flat key
23	Brake component	57	Gear shaft
24	Aft closure	58	Bearing
25	Fan blade	59	Hexagon fillister head screw
26	Fan cover	60	Limitr
27	Spring washer	61	Hook
28	Flat washer	62	Rope thimble
29	Hexagon bolt	63	Wire rope
30	Junction box	64	Block
31	Terminal	65	Aluminum pipe
32	Cover	66	Rope roli
33	Holding fixture	67	Wedge
34	Holding fixture	68	Bushing